

Factors Influencing Cost Performance Improvement on the Concept of Green Retrofitting High-Rise Offices Using Structural Equation Modelling-Partial Least Square (SEM-PLS)

Muhamad Aziz Wahyudi¹ Albert Eddy Husin², Nur Amalia³

Master of Civil Engineering, Mercu Buana University, West Jakarta, INDONESIA

E-mail: muhamadazizwahyudi56@gmail.com, albert_eddy@mercubuana.ac.id

Received December 27, 2022 | Accepted April 29, 2023 | Published May 08, 2023

ABSTRACT

The increase in energy consumption in the operation of the building construction industry globally has increased by a percentage of 35%, so that this increase can lead to an increase in carbon emissions which was originally at a percentage of 28% to 38%. The concepts of Green Retrofitting, Dynamic Systems and Value Engineering can be researched based on the influence on improving the cost performance of Green Retrofitting in high-rise (existing) office buildings and connected with the Structural Equation Modelling-Partial Least Square (SEM-PLS) analysis model. PLS-SEM is very appropriate to be used in research aimed at developing theories. The results of this study show that in the application of the Green Retrofitting concept in high-rise office buildings using Dynamic Systems and Value Engineering has a significant effect on improving the cost performance of Green Retrofitting and get the most influential factors are Top Management Support, Energy Efficiency, Water Efficiency, Indoor Air Quality, Retrofitting Planning, Retrofitting Initial Costs, Bill Of Quantity, Dynamic System Model Generation, Alternative Material Selection, and Material Cost Reduction.

Key word: highrise building; office; green retrofitting; system dynamics; value engineering; SEM-PLS

INTRODUCTION

The increase in energy consumption of the operation of the building construction industry globally increased by a percentage of 35%, (UN Environment Programme, 2020). The increase has led to increased carbon emissions, from 28% to 38%. (Robati et al., 2021).

Sustainable development parameters, Green Retrofitting is a parameter that can be used to control an increase in the number of existing buildings in buildings in developing countries with a percentage of 1.5%-2% (Rahmawati et al., 2018), so that the application of Green Retrofitting produces cost savings in terms of economic, environmental and social aspects up to a percentage of 10%-20%. (Ronald et al., 2020).

The process of implementing Green Retrofitting is an application system used in increasing the cost of building construction (Retrofitting Cost) to reduce the amount of energy consumption used up to a percentage of 10.77%. (Kim et al., 2017).

The energy crisis has an impact on increasing carbon emissions to the environment, so that the application of the green building concept can be significantly optimized. Dynamic System is a scenario system used in determining the rating (level) of cost increase control towards the optimization and efficiency of energy savings with the green building concept (Lee et al., 2015) and Value Engineering is a method used in calculating the optimization of energy savings and life cycle costs against the feasibility of the green building concept. (Yuan et al., 2020).

Seeing that there is a relationship between the concept and the factors above, the concepts of Green Retrofitting, Dynamic Systems and Value Engineering can be examined based on the influence on improving the cost performance of Green Retrofitting in high-rise (existing) office buildings. The complex relationship model and concept can use the Structural Equation Modelling-Partial Least Square (SEM-PLS) analysis model.

RESEARCH METHODS

Some characteristics that need to be considered include sample size, data distribution shape, missing values and measurement scale. The minimum sample size taken is based on the difference in levels in path coefficients (p Min) and a statistical strength test of 80% (Hair Jr et al., 2021).

Table 1.1 Table Minimum Sample Size For Level Difference with Minimum Path Coefficient and 80% Strength Test

Pmin	Significance Level		
	1%	5%	10%
0.05-0.1	1004	619	451
0.11-0.2	251	155	113
0.21-0.3	112	69	51
0.31-0.4	63	39	29
0.41-0.5	41	25	19

(Source: Hair Jr et al., 2021)

This research model determines the minimum sample size taken based on the path coefficient value of 0.25 and a statistical strength test of 80% at a significant level of 5% so that a minimum sample of 69 is obtained. Data information of 80 samples obtained.



Figure 1. Respondent Data (Source:author)

According to Sugiyono (2010: 62), data collection technique is the most strategic step in research, data collection is carried out with the Observation stage. (Nawawi and Martini, 1992:74), interviews (Sugiyono, 2010:194), and documentation (Hamidi, 2004:72), while primary data collection was carried out with the instrument validation stage, pilot survey, respondent data collection, questionnaire dissemination, validation of questionnaire results and data input process and model simulation on SEM-PLS.

The questionnaire data collected by the researcher in this research and will be processed and analyzed using "Structural Equation Modeling" (SEM). This method seems to dominate the use of multiple path and regression analysis that has been used frequently so far. This is because this analysis is more comprehensive because each value in each question of each latent variable or factor or in this method is referred to as an observed variable or sub-factor of a latent variable can be analyzed comprehensively. Researchers used SEM SMART-PLS software version 3.0.

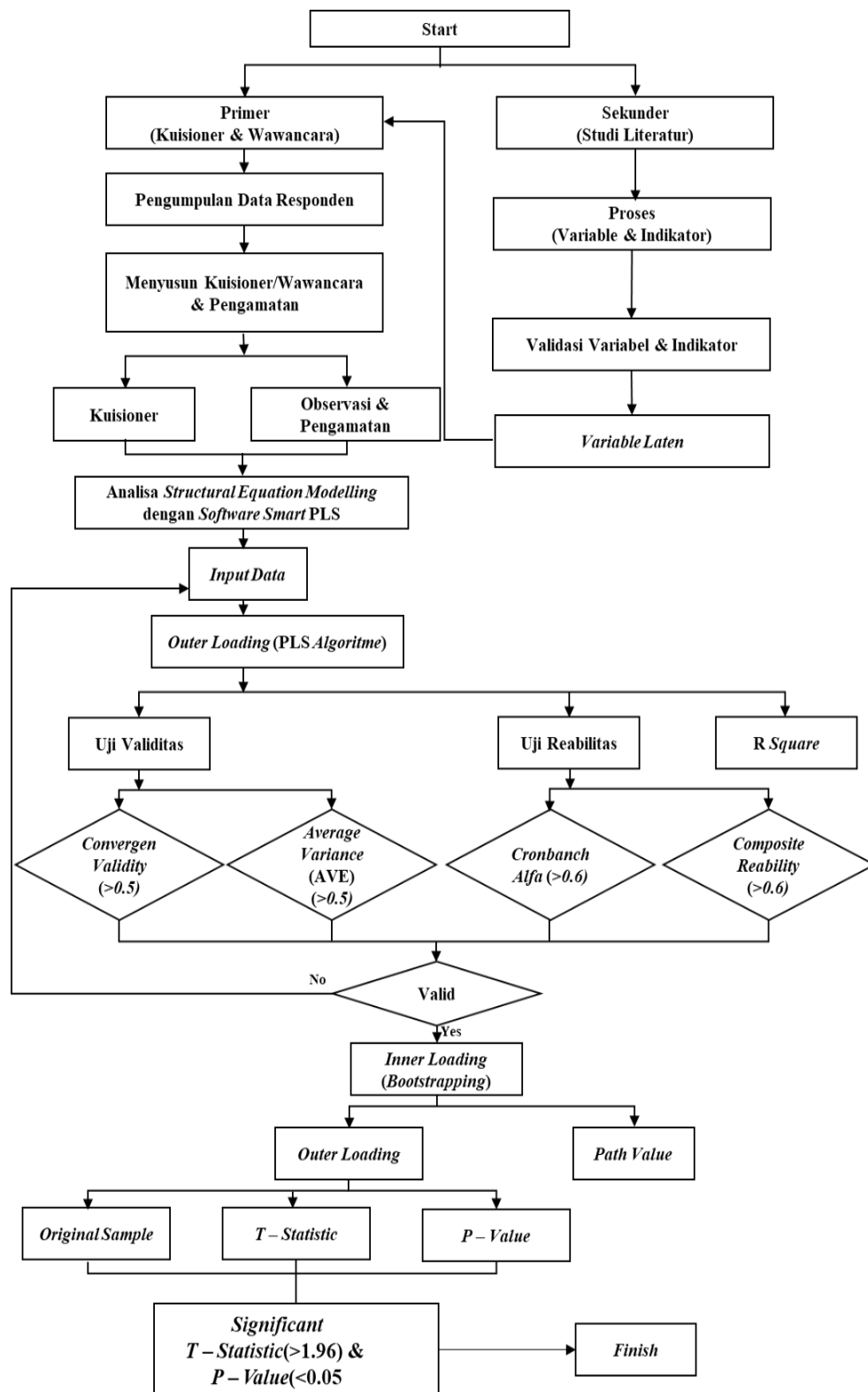


Figure 2. Structural Equation Modeling (SEM) Factor Diagrams (Source:author)

RESULT

Evaluation Model Outer Loading

Measurement of the indicator (Outer Model) is carried out by looking at Convergent validity, Average variance Extracted, Construct Reliability and Cronbach's Alpha. The model between latent variables and indicators and median variables of the study uses a reflective model. In SEM, there are 3 (three) activities carried out simultaneously, namely: validating and assessing the reliability of data (confirmatory factor analysis); develop models suitable for forecasting (path analysis); and obtaining models (structural models and regression analysis). Each modeling has a connection to a measurement model, a structural model, or a causal model. In contrast to structural models, which are modeling that describes hub-and-spoke relationships that are being hypothesized, model measurements are used to generate inferences about the validity and validity of discriminants.

Validity Test

The validity test serves to measure the validity or not of a research instrument can provide information from the variables tested correctly (Nur & Husin, 2022). The validity test can be accepted or said to be valid if the Convergence Validity value is greater than 0.5 and the Average Variance Extracted (AVE) value is greater than 0.5.

Table 2.2 Outer Loading (Factor Loading)

Indicator	Outer Loading	Indicator	Outer Loading
X1	0.954	X50	0.967
X2	0.863	X36	0.976
X3	0.969	X37	0.937
X4	0.969	X38	0.985
X5	0.952	X39	0.969
X6	0.953	X40	0.983
X7	0.962	X41	0.948
X8	0.920	X42	0.942
X9	0.793	X43	0.607
X10	0.906	X44	0.929
X11	0.569	X51	0.963
X12	0.922	X52	0.941
X13	0.719	X53	0.948
X14	0.943	X54	0.959
X15	0.924	X55	0.959
X16	0.821	X56	0.953
X17	0.942	X57	0.912
X18	0.723	X58	0.941

Indicator	Outer Loading	Indicator	Outer Loading
X19	0.800	X59	0.946
X20	0.919	X60	0.951
X21	0.953	X61	0.954
X22	0.896	X62	0.952
X23	0.936	X63	0.967
X24	0.912	X64	0.985
X25	0.908	X65	0.943
X26	0.764	X66	0.950
X27	0.933	X67	0.958
X28	0.917	X68	0.929
X29	0.873	X69	0.990
X30	0.912	X70	0.990
X31	0.963	X71	0.995
X32	0.950	X72	0.995
X33	0.919	X73	0.971
X34	0.942	X74	0.970
X35	0.981	Y1	0.918
X45	0.941	Y2	0.896
X46	0.950	Y3	0.938
X47	0.966	Y4	0.889
X48	0.735	Y5	0.694
X49	0.855	Y6	0.640

(Source:author)

Reability Test

The reliability test is carried out by looking at the composite reliability value of the indicator block that measures the construct. Composite Reliability and Cronbach's Alpha results will show satisfactory values if above 0.7. The composite reliability value at the output is presented in the following table:

Table 3. 3 Composite Reliability & Cronbach's Alpha

Variable	Cronbach's Alpha (>0,7)	Composite Reliability (>0,7)
Cost (Y)	0.911	0.932
Planning Document (DP)	0.956	0.968
Green Retrofitting (X2)	0.977	0.978
HighRise Building (X1)	0.957	0.962
Building Organization and Governance (OTKB)	0.950	0.961
Planning (PRN)	0.960	0.966
Making a Stock Flow Diagram (PSFD)	0.911	0.957
Maintenance of BGH Performance Utilization Period (PKBGHMP)	0.967	0.973
Environmental Tread Recovery (PTL)	0.881	0.944
Model Usage (PMOD)	0.777	0.874
The Role of Occupants and Uses (PPP)	0.962	0.976
Implementation (PLK)	0.962	0.972
Disassembly Process (PP)	0.978	0.986
Retrofitting Adjustment Modifier Process (PPSR)	0.861	0.935
Retrofitting Cost (RC)	0.936	0.953
System Dynamic (X3)	0.906	0.923
Evaluation Stages (TE)	0.960	0.971
Function Stages (TF)	0.899	0.952
Implementation Stages (TIMP)	0.938	0.970
Stages of Information (IT)	0.980	0.983
Creative Stages (TK)	0.966	0.978
Stages of Development (TP)	0.980	0.990
Presentation Stages (TPERES)	0.990	0.995
Value Engineering (X4)	0.987	0.988

(Source: author)

R Square

R-squared (R2) testing is a test carried out to measure the Goodness of Fit level of a structural model. The value of R-squared (R2) is used to measure how much influence a particular independent latent variable has on the dependent latent variable. According to Chin (1998) in Ghozali (2012: 27),

an R2 result of 0.67 indicates that the model is categorized as good. R2 results between 0.33 and 0.67 indicate that the model is categorized as moderate

Table 4. 4 R Square

Variable	R Square
Evaluation Stages (TE)	0.835
Value Engineering (X4)	0.578
Making a Stock Flow Diagram (PSFD)	0.449
Model Usage (PMOD)	0.841
Building Organization and Governance (OTKB)	0.914
Environmental Tread Recovery (PTL)	0.547
Function Stages (TF)	0.774
Disassembly Process (PP)	0.641
Retrofitting Adjustment Modifier Process (PPSR)	0.753
Cost (Y)	0.810
Green Retrofitting (X2)	0.438
The Role of Occupants and Uses (PPP)	0.650
Stages of Development (TP)	0.837
Creative Stages (TK)	0.730
Implementation Stages (TIMP)	0.679
Implementation (PLK)	0.922
Maintenance of BGH Performance Utilization Period (PKBGHMP)	0.877
Planning (PRN)	0.812
Presentation Stages (TPERES)	0.832
Retrofitting Cost (RC)	0.907
Stages of Information (IT)	0.698
Planning Document (DP)	0.916
System Dynamic (X3)	0.642

(Source: author)

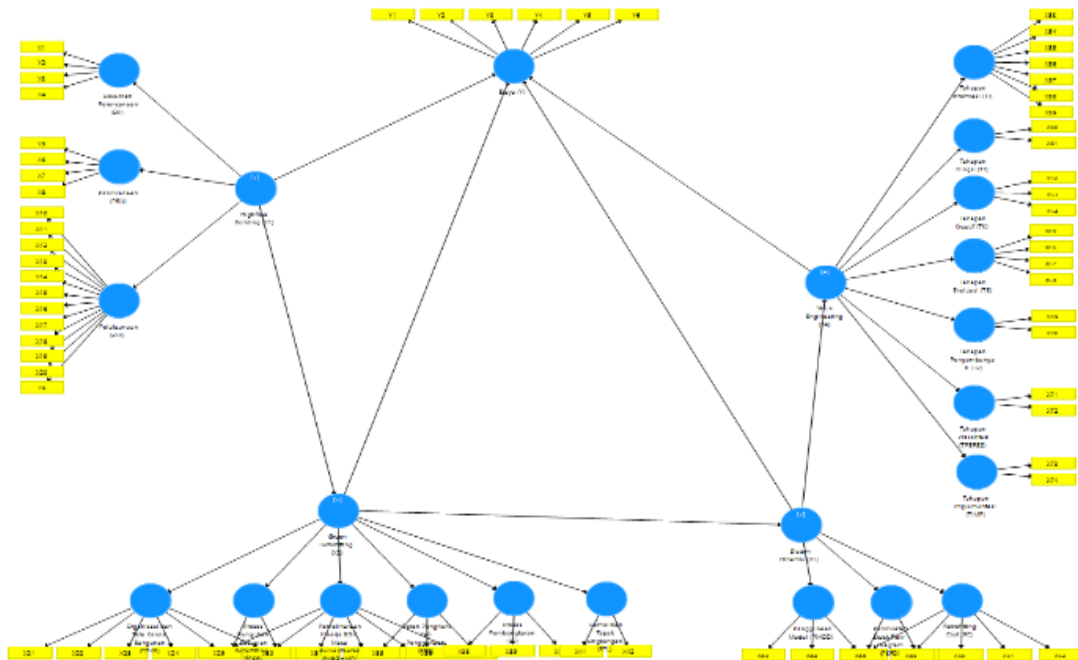


Figure 3.1 Research Model with SMART PLS (Source:author)

Evaluation of the Inner Loading Model

To test the value of structural models (inner loading) or models that connect between constructs (latent variables) are then analyzed using the Bootstrapping procedure (Hair et al., 2014). To determine the significance and strength of the relationships between constructs as well as to test hypotheses, the path coefficients between constructs are also measured. The value of the path coefficient ranges from -1 to +1. The relationship between the two constructs is stronger when the value is close to +1. Relationships that are less than -1 indicate negative relationships (Sarstedt, 2019). The result of interpretation of path coefficient according to table 7 path coefficient is the result taken from the bootstrapping procedure, the results of path analysis or structural models have a significant effect if the statistical T value is more than 1.96 and the p value is less than 0.05 (Ghozali & Latan, 2015)

The discussion and analysis obtained the factors taken by the top 10 influenced the improvement of the cost performance of Green Retrofitting based on System Dinamik and Value Engineering applied to High-Rise Office Buildings are as follows:

Table 5.5 Influencing Factors

No.	Sub Factor	Original Sample Value	Mean	R Square
1.	Top Management Support	0.995	5.263	0.922
2.	Energy Efficiency	0.995	5.350	
3.	Water Efficiency	0.990	4.425	0.916
4.	Indoor Air Quality	0.990	5.438	
5.	Retrofitting Planning	0.985	4.563	0.914
6.	Initial Cost of Retrofitting	0.985	4.438	0.907

No.	Sub Factor	Original Sample Value	Mean	R Square
7.	Bill Of Quantity	0.983	4.425	0.877
8.	Dynamic System Model Creation	0.981	5.313	0.841
9.	Selection of Alternative Materials	0.976	4.463	0.837
10.	Reduction of Material Costs	0.971	4.475	

(Source:author)

CONCLUSION

The results of the research are in the application of the concept of green areas in residential areas based on value engineering and lifecycle cost analysis has a significant effect on improving the cost performance of new green areas and obtaining the most influential factors, namely: Project Management, Infrastructure and Facilities Burden, Infrastructure and Facilities Service Functions, Microclimate and Ecosystem Preservation, Environmentally Friendly Materials, Development, Cost Breakdown Structure, LCC Analysis, Evaluation, Value Engineering. By using SEM-PLS analysis, it is more effective in obtaining correlation of theoretical relationships in research.

ACKNOWLEDGEMENT

The results of this study show that in the application of the Green Retrofitting concept in high-rise office buildings using Dynamic Systems and Value Engineering has a significant effect on improving the cost performance of Green Retrofitting and get the most influential factors are Top Management Support, Energy Efficiency, Water Efficiency, Indoor Air Quality, Retrofitting Planning, Initial CostaRetrofitting, Bill Of Quantity, Dynamic System Model Manufacturing, Alternative Material Selection, and Material Cost Reduction.

REFERENCES

- Al-Kodmany, K. (2018). The sustainability of tall building developments: A conceptual framework. *Buildings*, 8(1), 1–31. <https://doi.org/10.3390/buildings8010007>
- Asyera, E., Gamal, A., & Pandjaitan, T. H. (2020). Occupant behavioral change for energy efficiency in office buildings. *AIP Conference Proceedings*, 2255(September). <https://doi.org/10.1063/5.0020451>
- Barlas, Y. (1997). *Structure-oriented Behavior Tests in Model Validation* 1. 1996.
- Berawi, M. A., Miraj, P., Windrayani, R., & Berawi, A. R. B. (2019). Stakeholders' perspectives on green building rating: A case study in Indonesia. *Heliyon*, 5(3), e01328. <https://doi.org/10.1016/j.heliyon.2019.e01328>
- Buratti, C., Orestano, F. C., & Palladino, D. (2016). Comparison of the Energy Performance of Existing Buildings by Means of Dynamic Simulations and Artificial Neural Networks. *Energy Procedia*, 101(September), 176–183. <https://doi.org/10.1016/j.egypro.2016.11.023>
- Campion, N., Thiel, C. L., Focareta, J., & Bilec, M. M. (2016). Understanding Green Building Design and Healthcare Outcomes: Evidence-Based Design Analysis of an Oncology Unit. *Journal of Architectural Engineering*, 22(3), 04016009. [https://doi.org/10.1061/\(asce\)ae.1943-5568.0000217](https://doi.org/10.1061/(asce)ae.1943-5568.0000217)
- Dong, J., Li, R., & Wang, D. (2018). System dynamics-based project cost risk accession control modeling. *Proceedings - 8th International Conference on Instrumentation and Measurement, Computer, Communication and Control, IMCCC 2018*, 81–86. <https://doi.org/10.1109/IMCCC.2018.00024>
- Ebrahim, A., & Wayal, A. S. (2019). BIM based building performance analysis of a green office

building. *International Journal of Scientific and Technology Research*, 8(8), 566–573.

Ekanayake, B. J., Sandanayake, Y., & Ramachandra, T. (2018). Application of value management to refurbishment projects: A Sri Lankan case study. *Proceeding of the 34th Annual ARCOM Conference, ARCOM 2018, September*, 597–606.

Erma, S. (2006). *Pemodelan dan Simulasi. Pemodelan Dan Simulasi*.

Eromobor, & Das, D. K. (2013). Dynamic Modelling Approach for Designing Sustainable Green Buildings. SB13 Southern African Conference, October, 2–11. http://www.irbnet.de/daten/iconda/CIB_DC26229.pdf#page=173

Fan, Y., & Xia, X. (2018). Energy-efficiency building retrofit planning for green building compliance. *Building and Environment*, 136, 312–321. <https://doi.org/10.1016/j.buildenv.2018.03.044>

He, Qing, Zhao, H., Shen, L., Dong, L., Cheng, Y., & Xu, K. (2019). Factors influencing residents' intention toward green retrofitting of existing residential buildings. *Sustainability (Switzerland)*, 11(15), 1–23. <https://doi.org/10.3390/su11154246>

He, Qiong, Hossain, M. U., Ng, S. T., Skitmore, M., & Augenbroe, G. (2021). A cost-effective building retrofit decision-making model – Example of China's temperate and mixed climate zones. *Journal of Cleaner Production*, 280,

Hemanta Doloi. (2012). Cost Overruns and Failure in Project Management: Understanding the Roles of Key Stakeholders in Construction Projects. *Journal of Construction Engineering and Management*, March, 1–13. [https://doi.org/10.1061/\(ASCE\)CO.1943-7862](https://doi.org/10.1061/(ASCE)CO.1943-7862)

Hertwich, E. G., Ali, S., Ciacci, L., Fishman, T., Heeren, N., Masanet, E., Asghari, F. N., Olivetti, E., Pauliuk, S., Tu, Q., & Wolfram, P. (2019). Material efficiency strategies to reducing greenhouse gas emissions associated with buildings, vehicles, and electronics - A review. *Environmental Research Letters*, 14(4). <https://doi.org/10.1088/1748-9326/ab0fe3>

Hwang, B. G., Zhu, L., Wang, Y., & Cheong, X. (2017). Green Building Construction Projects in Singapore: Cost Premiums and Cost Performance. *Project Management Journal*, 48(4), 67–79. <https://doi.org/10.1177/875697281704800406>

Husin, A. E., Karolina, T., Rahmawati, D. I., & Abdillah, C. F. (2022). Increasing Value of Façade at Green Hotel Building Based on Value Engineering. *The Open Civil Engineering Journal*, 15(1), 398–405. <https://doi.org/10.2174/1874149502115010398>

Imron, A. I., & Husin, A. E. (2021). Peningkatan Kinerja Biaya Berbasis Value Engineering Pada Proyek Green Hospital. *Jurnal Aplikasi Teknik Sipil*, 19(3), 323. <https://doi.org/10.12962/j2579-891x.v19i3.9144>

Jose. (2016). *Iccrem 2016 97*. 2005, 97–102.

Kartika Ayu, S. (2017). Analisis Konsumsi Energi dan Program Konservasi Energi (Studi Kasus : Gedung Perkantoran dan Kompleks Perumahan TI). *Sebatik*, 30, 41–51

Kiamili, C., Hollberg, A., & Habert, G. (2020). Detailed assessment of embodied carbon of HVAC systems for a new office building based on BIM. *Sustainability (Switzerland)*, 12(8). <https://doi.org/10.3390/SU12083372>

Latief, Y., Berawi, M. A., Van Basten, Riswanto, & Budiman, R. (2017). Construction Performance Optimization toward Green Building Premium Cost Based on GreenShip Rating Tools Assessment with Value Engineering Method. *Journal of Physics: Conference Series*, 877(1). <https://doi.org/10.1088/1742-6596/877/1/012041>

Lee, L. J. H., Leu, J. Der, & Huang, Y. W. (2015). Implementation of enterprise resource planning using the value engineering and system dynamics methods. *Proceedings - 2015 2nd International Conference on Information Science and Control Engineering, ICISCE 2015*, 764–768. <https://doi.org/10.1109/ICISCE.2015.176>

Leon, H., Osman, H., Georgy, M., & Elsaid, M. (2018). System Dynamics Approach for Forecasting Performance of Construction Projects. *Journal of Management in Engineering*, 34(1), 04017049. [https://doi.org/10.1061/\(asce\)me.1943-5479.0000575](https://doi.org/10.1061/(asce)me.1943-5479.0000575)

Loh, L., Thao, N. T. P., Sim, I., Thomas, T., & Yu, W. (2016). Pelaporan yang Berkelanjutan di Asean. *Journal Nasional University of Singapur*, 1–28.

Menteri Pekerjaan Umum dan Perumahan Rakyat Republik Indonesia. (2021). Peraturan Menteri Pekerjaan Umum dan Perumahan Rakyat Republik Indonesia Nomor 21 Tahun 2021 Tentang Penilaian Kinerja Bangunan Gedung Hijau. 1–38. <https://jdih.pu.go.id/detail-dokumen/2882/1>

Muhammadi. (2001). Analisis Sistem Dinamis (Lingkungan Hidup, Sosial, Ekonomi, Manajemen). UMJ.

Mohammadpour, A., Anumba, C. J., & Messner, J. I. (2017). Retrofitting of Healthcare Facilities: Case Study Approach. *Journal of Architectural Engineering*, 23(3), 05017003. [https://doi.org/10.1061/\(asce\)ae.1943-5568.0000248](https://doi.org/10.1061/(asce)ae.1943-5568.0000248)

Mousavi, S. Y. (2017). The Process of Creating Generations of High-Rise Buildings in the World. 2nd International Conference on Researches in Science and Engineering, November, 9. https://www.researchgate.net/publication/320946699_high-rise_office_building

Oliver, C. D., Nassar, N. T., Lippke, B. R., & McCarter, J. B. (2014). Carbon, Fossil Fuel, and Biodiversity Mitigation With Wood and Forests. *Journal of Sustainable Forestry*, 33(3), 248–275. <https://doi.org/10.1080/10549811.2013.839386>

PermenPUPR No.2. (2015). Regulation of Green Building. 83.

Plebankiewicz, E., Juszczak, M., & Kozik, R. (2019). Trends, costs, and benefits of green certification of office buildings: A Polish perspective. *Sustainability (Switzerland)*, 11(8). <https://doi.org/10.3390/su11082359>

Porwal, A., Parsamehr, M., Szostopal, D., Ruparathna, R., & Hewage, K. (2020). The integration of building information modeling (BIM) and system dynamic modeling to minimize construction waste generation from change orders. *International Journal of Construction Management*, 0(0), 1–20. <https://doi.org/10.1080/15623599.2020.1854930>

Provinsi DKI Jakarta. (2010). Peraturan Daerah Provinsi Daerah Khusus Ibukota Jakarta Nomor 7 Tahun 2010 Tentang Bangunan Gedung. 1–9.

Ronald, J., Pahnael, N., Soekiman, A., Wimala, M., Studi, P., Manajemen, M., Konstruksi, P., Universitas, P., & Parahyangan, K. (2020). Penerapan kebijakan insentif. 6(1), 1–13.

Sahlol, D. G., Elbeltagi, E., Elzoughiby, M., & Abd Elrahman, M. (2021). Sustainable building materials assessment and selection using system dynamics. *Journal of Building Engineering*, 35, 101978. <https://doi.org/10.1016/j.jobe.2020.101978>

Sugiyono. (2008). Metode Penelitian Kuantitatif, Kualitatif dan R&D. In Alfabeta. <https://doi.org/2008>

Thaickavil, N. N., & Thomas, J. (2019). Green Rating Credits for Waste Utilization in Construction. Springer Singapore. https://doi.org/10.1007/978-981-13-1202-1_17

Tan, Y., Shuai, C., & Wang, T. (2018). Critical success factors (CSFs) for the adaptive reuse of industrial buildings in Hong Kong. *International Journal of Environmental Research and Public Health*, 15(7). <https://doi.org/10.3390/ijerph15071546>

UN Environment Programme. (2020). 2020 Global Status Report for Buildings and Construction. Global Status Report, 20–24. www.iea.org

UU RI Nomor 28 tahun 2002. (2002). Bangunan Gedung. Undang-Undang Republik Indonesia Nomor 28 Tahun 2002 Tentang Bangunan Gedung, 1, 1–5. <https://www.google.com/url?sa=t&rct=j&q=&esrc=s&source=web&cd=1&cad=rja&uact=8&ved=2ahUKEwjWxrKeif7eAhVYfysKHcHWAOWQFjAAegQICRAC&url=https%3A%2F%2Fwww>

ojs.go.id%2Fid%2Fkanal%2Fpasar-modal%2Fregulasi%2Fundang-undang%2FDocuments%2FPages%2Fundang-undang-nomo

Wang, D., Pang, X., Wang, W., Qi, Z., Ji, Y., & Yin, R. (2020). Evaluation of the dynamic energy performance gap of green buildings: Case studies in China. *Building Simulation*, 13(6), 1191–1204. <https://doi.org/10.1007/s12273-020-0653-y>

Wao, J. O. (2018). Weighted Product Method in the Value Engineering Process for Construction Project. *International Journal of Scientific Research and Management*, 6(12). <https://doi.org/10.18535/ijserm/v6i12.ec03>

Xing, H., Spence, S., & Chen, H. (2020). A comprehensive review on countermeasures for CO2 emissions from ships. *Renewable and Sustainable Energy Reviews*, 134(June), 110222. <https://doi.org/10.1016/j.rser.2020.110222>

Zoghi, M., & Kim, S. (2020). Dynamic modeling for life cycle cost analysis of BIM-based construction waste management. *Sustainability (Switzerland)*, 12(6).